

Into the Woods

makower uk

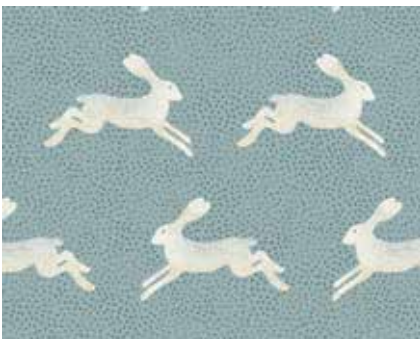
BY THE HENLEY STUDIO FOR MAKOWER UK



Woodland Footpath
designed by: **Tiffany Hayes**

Quilt Size: 56" x 80"

andoverfabrics.com



andover

•
•
•
•
makower uk

Free Pattern Download Available

1384 Broadway New York, NY 10018
Tel. (800) 223-5678 • andoverfabrics.com

5/15/17

Woodland Footpath Quilt



Introducing Andover Fabrics new collection: **Into the Woods**
by the Henley Studio for Makower UK. Quilt designed by Tiffany Hayes

Quilt finishes 56" x 80"

12 Block Y: 8" x 8"

16 Block Z: 8" x 16"

Soft and subtle moss greens and grayed teals make this throw-size quilt a lovely addition to any room. The country landscape prints tell a story, perhaps about a band of brave rabbits living in Watership Down.

Cutting Directions

Note: Read assembly directions before cutting patches. All measurements are cut sizes and include 1/4" seam allowances. A fat 1/8 is a 9" x 20"-22" cut of fabric. A fat 1/4 is an 18" x 20"-22" cut. WOF designates the width of fabric from selvedge to selvedge (approximately 42" wide).

Fabric A

Fussy-cut (2) strips 8 1/2" x WOF
(read Step 4 before cutting)

Fabric B

Fussy-cut (2) strips 8 1/2" x WOF
(read Step 4 before cutting)

Fabric C

Cut (4) rectangles 8 1/2" x 16 1/2"
Cut (4) squares 8 1/2"
Cut (112) squares 4 1/2"

Fabric D

Cut (7) strips 2 1/2" x WOF for binding
Cut (2) rectangles 8 1/2" x 16 1/2"
Cut (2) squares 8 1/2"

3 Greens

From each:
Cut (2) rectangles 8 1/2" x 16 1/2", cut lengthwise
Cut (2) squares 8 1/2"

2 Fat 1/8's

From each:
Cut (2) squares 8 1/2"

4 Fat 1/4's

From each:
Cut (2) rectangles 8 1/2" x 16 1/2", cut lengthwise

Backing

Cut (2) panels 32" x 88", pieced to fit quilt top with overlap on all sides

Fabric Requirements

		Yardage	Fabric
Fabric A	border	1 yard	1848-B
Fabric B	border	1 yard	1848-S
Fabric C	background	2 3/4 yards	1852-S5
Fabric D	binding, blocks	1 1/4 yards	1852-S9
3 Greens	blocks	1/2 yard each	1850-G 1853-G4 1854-G
2 Fat 1/8's	blocks	fat 1/8 yard each	1852-B8 1854-B
4 Fat 1/4's	blocks	fat 1/4 yard each	1849-S 1850-B 1853-B5
Backing		5 yards	1855-B

Making the Quilt

- The blocks are made with quick stitch-and-flip piecing methods. Draw a diagonal line on the wrong side of each Fabric C 4 1/2" square. Referring to Diagram 1, place a marked square on an 8 1/2" square, right sides together, aligning raw edges at the corner. Stitch on the drawn line; trim away and discard excess fabric. Press open. Repeat on the opposite corner, watching orientation of the sewing. Repeat on the remaining corners (Diagram 2). Make 12 Block Y with the remaining 8 1/2" squares. (Save Fabric C 8 1/2" squares for later.)

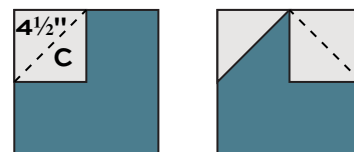


Diagram 1

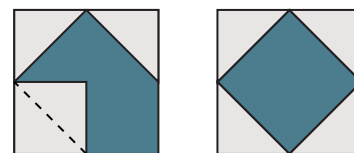


Diagram 2 Block Y – Make 12

- In the same manner, stitch Fabric C 4 1/2" squares to each corner of the 8 1/2" x 16 1/2" rectangles (Diagram 3). Make 16 Block Z. (Save Fabric C rectangles for later.)

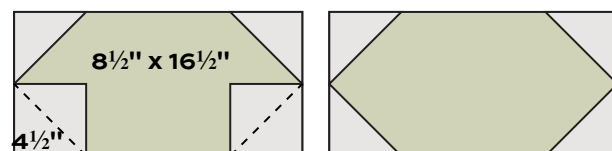
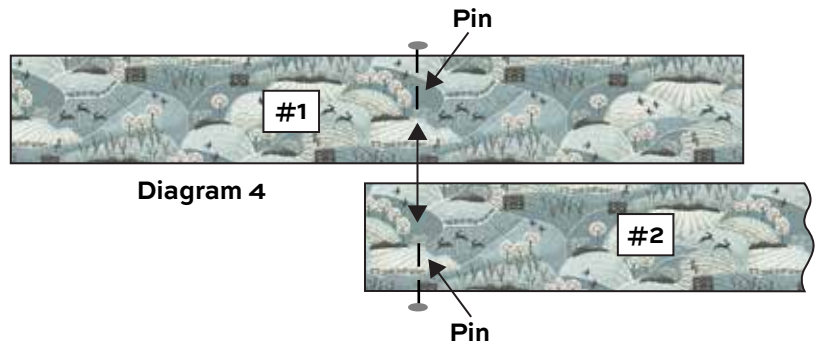


Diagram 3

Block Z – Make 16

Woodland Footpath Quilt

3. Referring to the Quilt Diagram, position the blocks into 7 vertical rows as shown. Be sure to orient the blocks so the prints remain upright. Add the Fabric C rectangles and squares at the top and bottom of rows where needed. Join the blocks and patches into rows, and then join the rows.



4. The border strips must be pieced. If you wish the print to look continuous, use this method to “hide” the seam. Cut 2 Fabric A border strips from the same part of the print. Position one strip (strip #1) above the second strip (strip #2), right sides facing up. Shift strip #2 so the printed motifs align as shown in Diagram 4. Place a pin on each strip at the place where they align, and where you wish the seam to be.



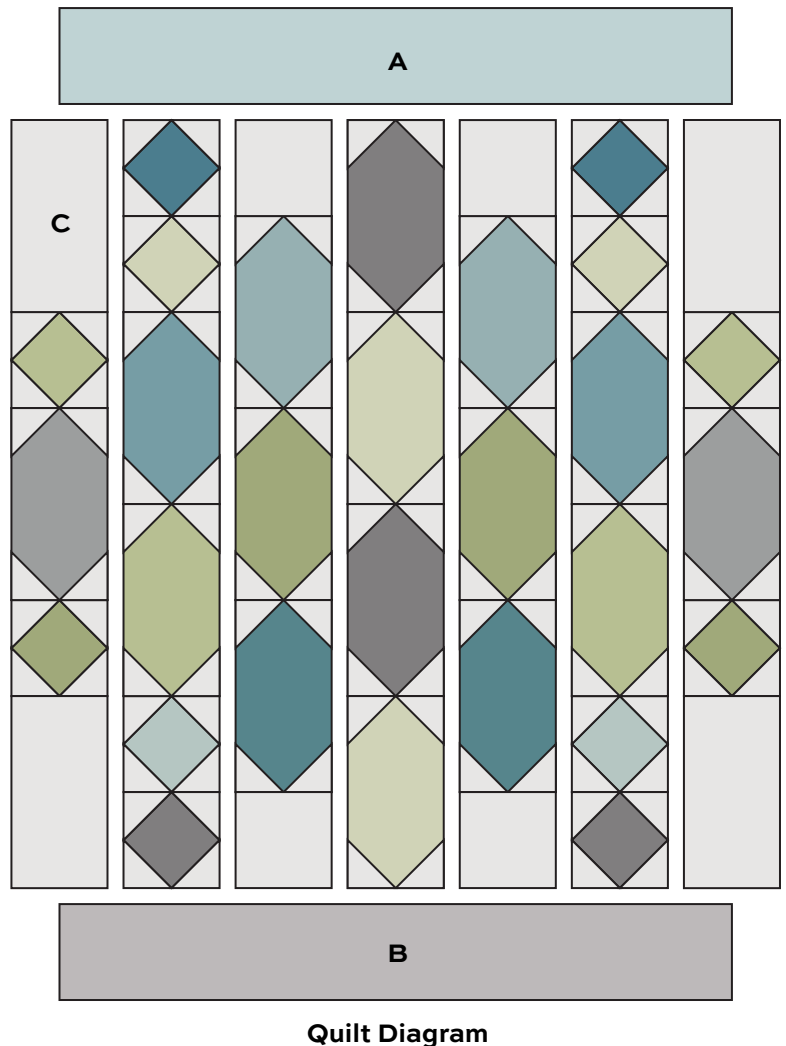
Fold under the fabric near the left end of strip #2 at the designated spot for the seam; finger press the fold line. With *right sides facing up*, position strip #2 on top of strip #1 so the printed motifs are continuous (Diagram 5). Lightly mark strip #1 at the edge of the fold with chalk or a light pencil. Separate the strips. Cut $\frac{1}{2}$ " to the left of the fold line of strip #2. Likewise, cut $\frac{1}{2}$ " to the right of the drawn line on strip #1. Be careful that you are cutting the strips in the correct place. The seam allowances make each strip longer, not shorter.

Position strip #2 on top of strip #1, right sides together and cut ends aligned. The fold line of strip #2 should be on top of the drawn line on strip #1. If you wish to test the seam, baste along the fold line. Open up the strips to see if the print aligns as you wish. If it does, stitch the seam in a regular stitch. If it doesn't, remove the basting and shift the strips as needed, and then stitch the seam. Cut the border $56\frac{1}{2}$ ", or the width of the quilt from raw edge to raw edge.

Repeat these steps using Fabric B. Sew Fabric A border to the top of the quilt and Fabric B border to the bottom.

Finishing the Quilt

5. Layer the quilt with batting and backing and baste. Quilt in the ditch around borders and block patches. Quilt around the printed motifs. Quilt Fabric C patches as you wish. Bind to finish the quilt.



Into the Woods

BY THE HENLEY STUDIO FOR MAKOWER UK

makower uk
The Henley Studio



1848-B*



1848-S*



1849-B*



1849-S*



1850-B*



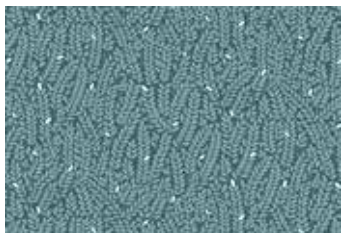
1850-G*



1851-G



1851-Q



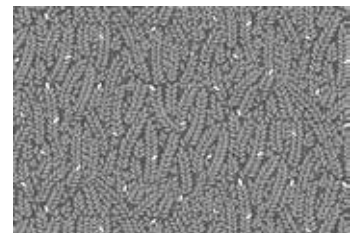
1852-B8*



1852-Q



1852-S5*



1852-S9*



1853-B5*



1853-G4*



1853-Q2



1853-S3



1854-B*



1854-G*



1855-B*



1855-G

*Indicates fabrics used in quilt pattern. Fabrics shown are 25% of actual size.

andover



makower uk
The Henley Studio

Free Pattern Download Available

1384 Broadway New York, NY 10018
Tel. (800) 223-5678 • andoverfabrics.com